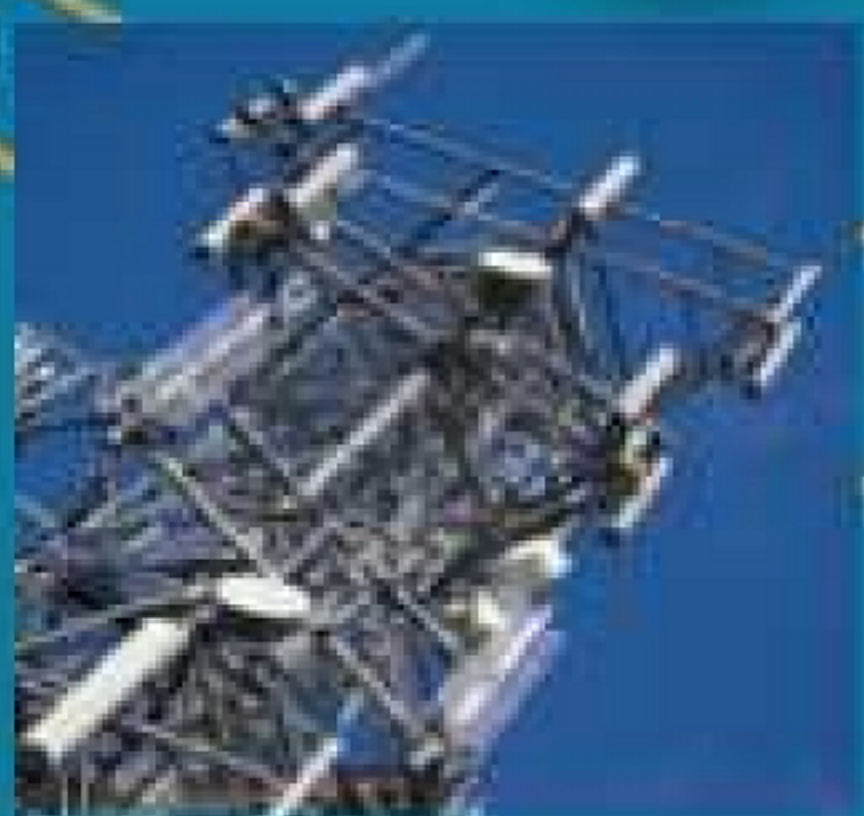
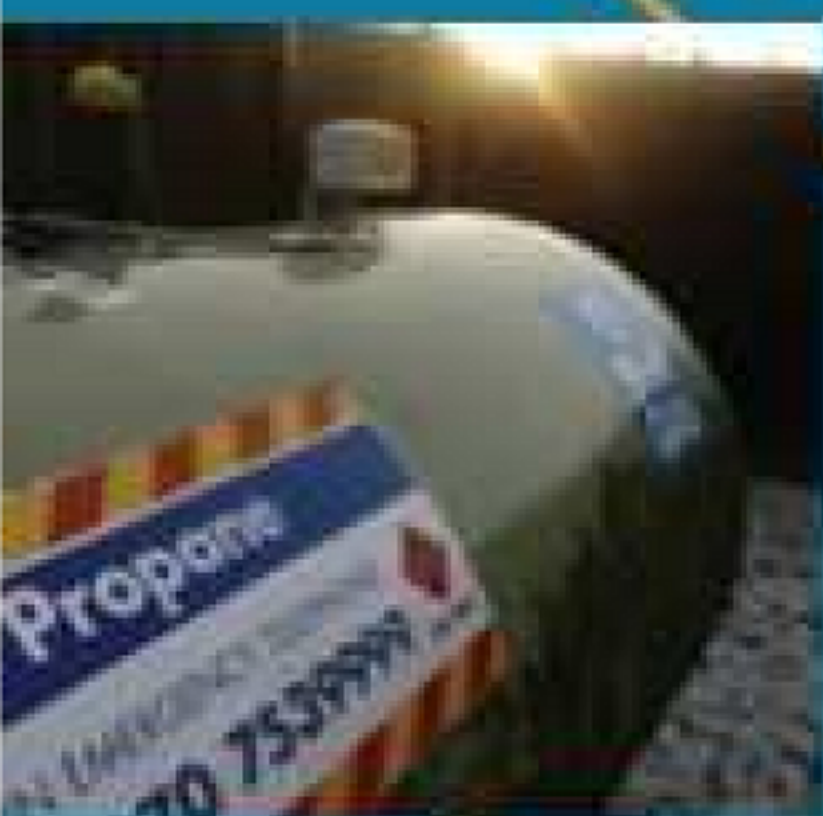


Metron2

Telemetry that make's sense



INTRUDER ALARM
SERVICE NOW DUE
HIGH PRESSURE
MACHINE MALFUNCTION
TANK LEVEL
METER READING





Affordable and Flexible

The Metron2 enables you to quickly and easily address a range of remote monitoring and alarming applications using the same low cost hardware.

Four configurable inputs

The 4 inputs can work with a range of sensors, meters and other signals giving a high degree of flexibility.

Integral display

The integral back lit display means the device can be used to show the readings locally, as well providing an easy way for the user to easily configure and interrogate the unit.

Self powered

The Metron2 can operate from it's own internal battery, even providing power to the sensors, or you can connect an external power source such as solar cell.

Low cost operation

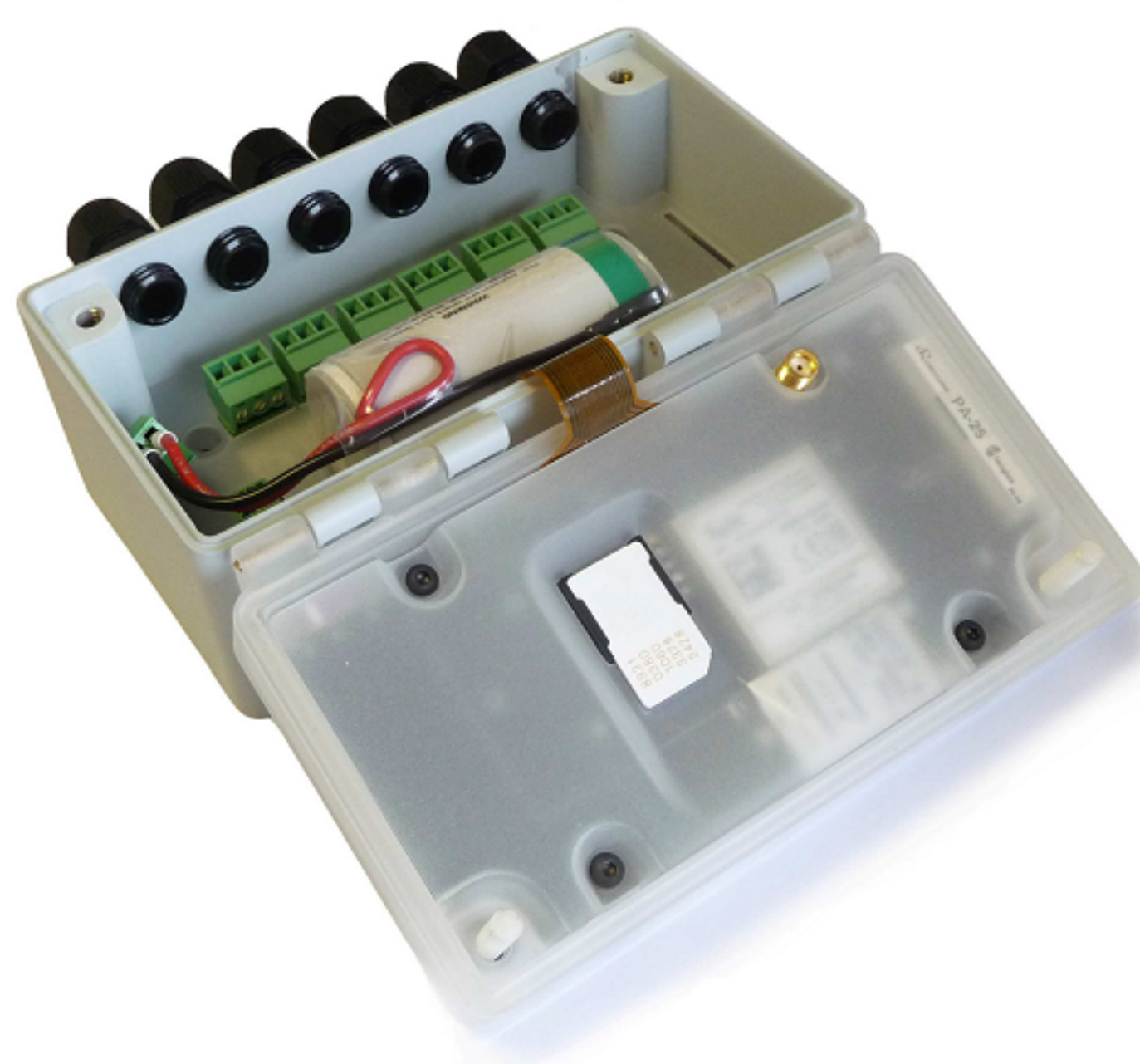
The quad band GSM modem gives global operation and low cost GPRS data transfer.

Low installation cost

It's quick and easy to install and there's no need for qualified electricians.

Data logging

The unit can store 1,500 readings each with a time and date stamp

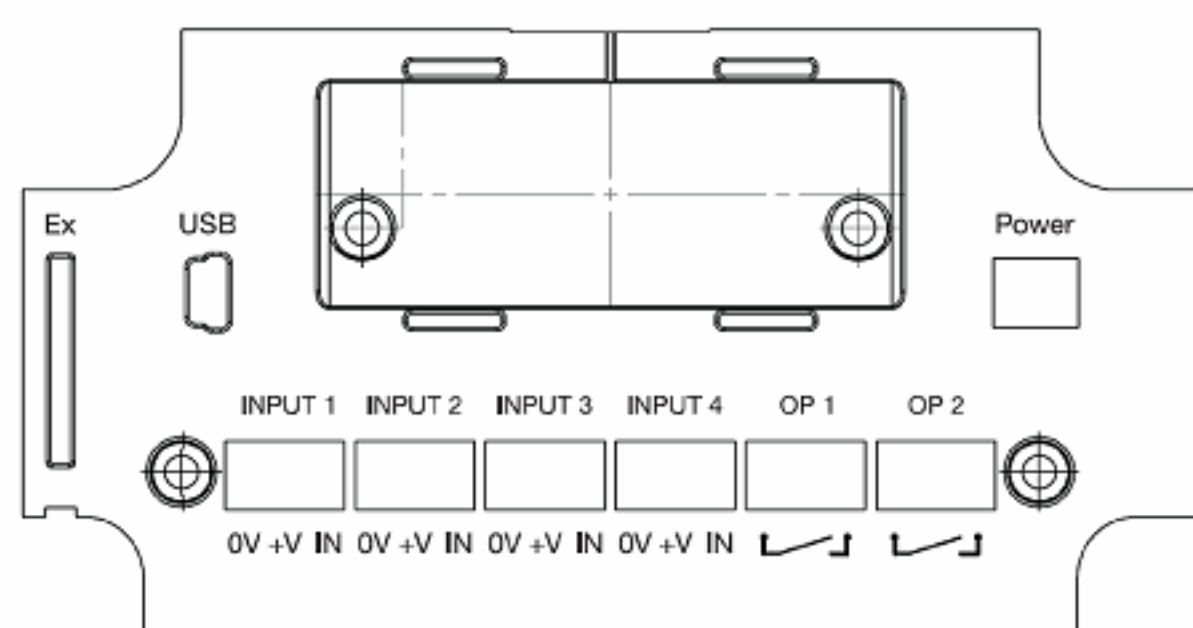
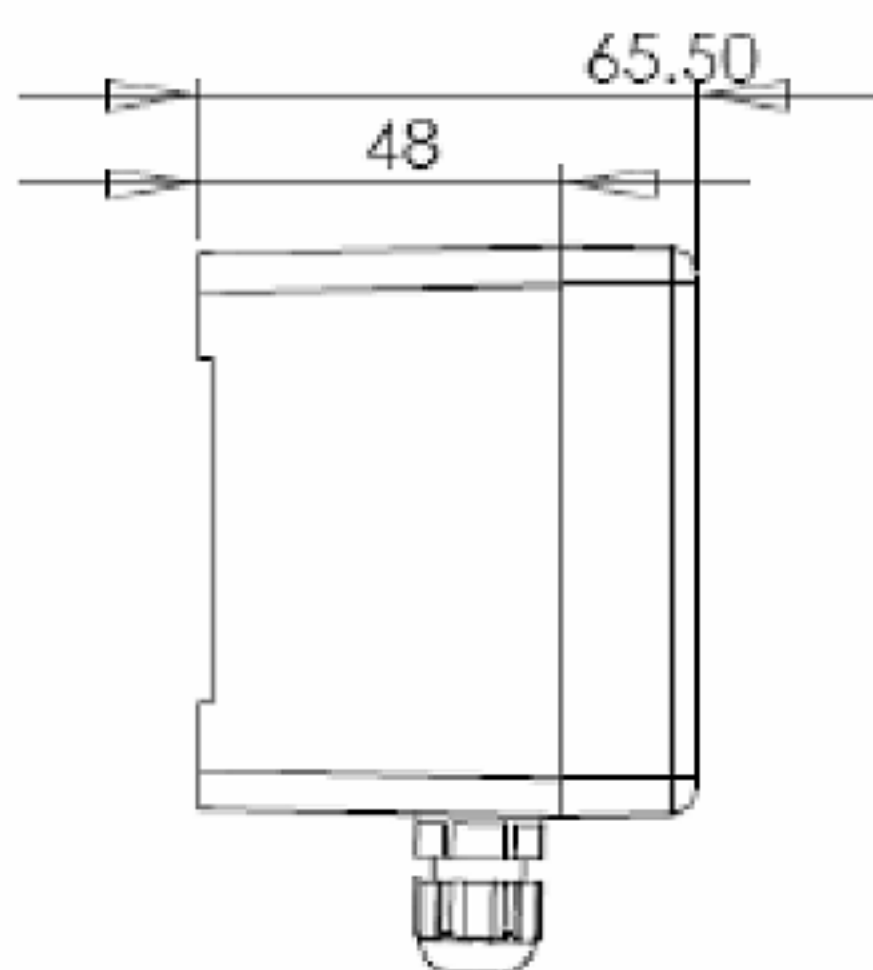
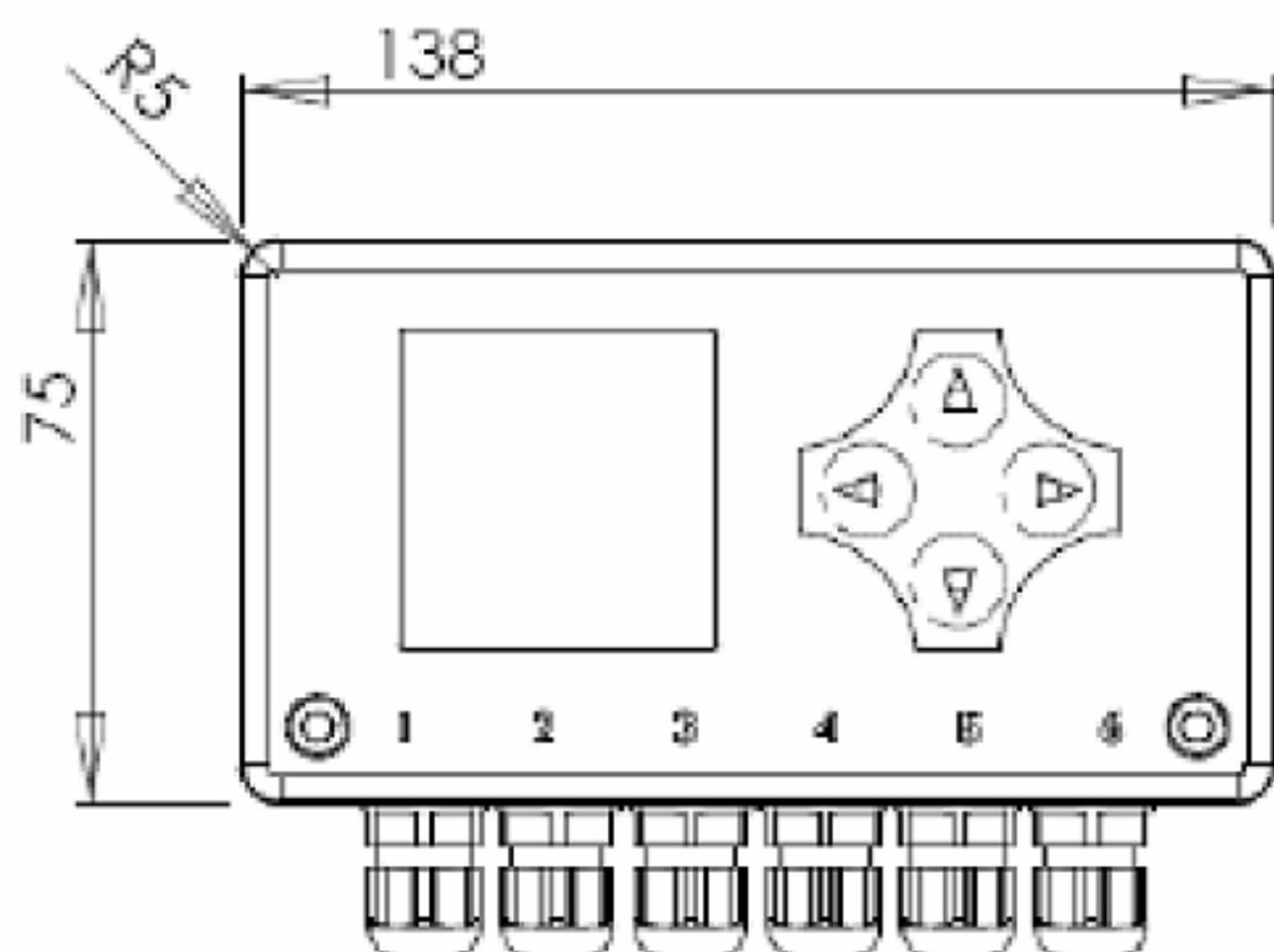


PAWCO Ltd

+44 (0) 1347 838080

sales@pawco.co.uk

www.pawco.co.uk



Global telemetry solutions
at your fingertips

Summary of Technical Features

Ability to interface with up to four analogue (0-10V or 4-20mA), digital (ON/OFF) or pulse sensors.

On-board excitation, 3.6 volts (non-regulated), 5 v, or 21.6 volts (max 31.25mA).

Internal battery powered with typically 5 year life, or external 6 to 24 Vdc power source (0.5 amps).

Back lit LCD Display, 40 x 40mm, 128 x 128 pixels, to help with on-site setup & diagnosis.

Quad-band GSM/GPRS modem. Communications by text message and GPRS, using a range of protocols.

USB port for programming & firmware upgrade.

Programmable locally or remotely.

Over the air firmware upgrade capabilities.

IP68 enclosure measuring 138 x 75 (plus glands) x 65.6mm.

Expansion board socket for future use.

Optional GPS receiver for location information

20 alarm thresholds per channel

Real time clock and data logging (1,500 records)

PAWCO Ltd
+44 (0) 1347 838080
sales@pawco.co.uk
www.pawco.co.uk



Applications

Remote tank level monitoring

Remote meter reading

Water network monitoring (flow & pressure)

Environmental monitoring (flow, pH, turbidity)

Security

M2M—alerts from machines

Irrigation and abstraction monitoring and control

Mobile asset monitoring—with the GPS version

PAWCO Ltd
+44 (0) 1347 838080
sales@pawco.co.uk
www.pawco.co.uk